



e-NEWS SEPTEMBER 2022

### IN THIS ISSUE...

- A MESSAGE FROM THE PRESIDENT
- Are Your Staff Performing UNLICENSED Land Surveying Activities?
- Dana Caccamise presenting at the Cal Poly Pomona Conference
- WHERE IN CALIFORNIA IS THIS?
- IN THE NEWS

## A MESSAGE FROM THE PRESIDENT



As a new school year starts, this is a reminder that students are focusing on foundational coursework designed to advance career ambitions. In addition to student chapters of CLSA at various colleges and universities, there is a growing Young Surveyors Network. Its function is to continue communication among newly licensed Land Surveyors and those preparing for the exam.

With social media enabling this connection, field trips are scheduled, which add “on the ground” experience to topics covered in class.

To learn more, reach out to California’s YSN coordinator, Sarah Walker:

- Email: [info@caysn.org](mailto:info@caysn.org)
- LinkedIn: [California Young Surveyors Network](#)
- Facebook: [California Young Surveyors Network](#)
- Instagram: [@californiaysn](#)

Warren D. Smith, LS  
President, CLSA

### PUBLICATIONS

2022 publications are now in stock and shipping from the CLSA Store.

*2022 PE Act and PLS Act with Board Rules*

*2022 Complete Package with DVD*

*2022 Subdivision Map Act & Index*

[CLICK HERE](#)

**ARTICLE & PHOTO SUBMISSIONS FOR CALIFORNIA SURVEYOR MAGAZINE**

Do you have a photo from your field work that would

### Are Your Staff Performing UNLICENSED Land Surveying Activities?

*By Robert McMillan*

Being retired gives me too much time to spend on Facebook. Too often I see posts from technicians asking questions about “performing unlicensed surveys.” Of course, they do not phrase it like that – for example, a recent post in a Surveying group asked “How much should I charge to set wood stakes at the property corners for the construction of a new house. I know I can’t set IPs because I’m not licensed. It is a million \$ house.” Many presumably licensed land surveyors discouraged the unlicensed practice. Alarming there were many encouraging responses from unlicensed people saying “\$50 an hour” or “\$85 an hour” encouraging this technician. When called out on it, these encouragers responded with “I do it all the time” and “This is my side hustle” even getting belligerent at me for pointing out that they were breaking the law and demeaning the profession. So what do you think? Are your technicians “side hustling” on the weekends? Are they using your equipment with or without your knowledge? Could you be held responsible for their mistakes? Will your E&O insurance cover you? Might your license be in jeopardy for aiding and abetting? B&P Code §8780(b)(7).

**Dana Caccamise, PhD, NOAA's NGS Pacific Southwest Regional Geodetic Advisor presenting at the Cal Poly Pomona Conference**

make a great magazine cover? Do you have an idea for an article or have you written an article that you'd like us to consider including in the next issue? Please send your submissions and ideas to California Surveyor Editor, [Joseph Waltz](#).

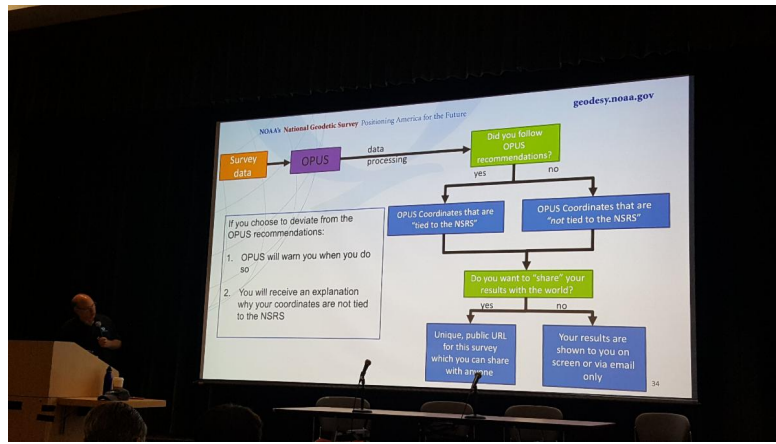
### **NSPS - STOLEN EQUIPMENT REGISTRY**

Reminder - NSPS provides a registry of stolen equipment. [CLICK HERE TO LEARN MORE](#)

### **COURTHOUSEDIRECT.COM**



Offers a \$.07 per page discount and will automatically donate \$.10 per page to CLSA when members download courthouse documents through this website. These instruments include Deeds, Easements, Rights-of-Way, Releases, Liens, etc.



### **WHERE IN CALIFORNIA IS THIS?**



Submit your answer to: [Robert McMillan](#)

**JOIN THE BEST**

HIRING NEW TEAM MEMBERS

**TOP WORK PLACES**  
SINCE 2016

THE ORANGE COUNTY REGISTER

[www.tait.com](http://www.tait.com)

**TAIT**

SANTA ANA, CA RANCHO CORDOVA, CA LOVELAND, CO

CLICK HERE  
ORDER TODAY

# FUNDAMENTALS OF SURVEYING: EXAM STUDY COURSE

Over 16 hours of videos and manual

Member Price - \$199

Topics included are based on the current NCEES Fundamentals of Surveying (FS) exam specifications and recommended knowledge.

Presenters: Dane Courville, PLS and Knud Hermansen, PLS, PE, Ph.D.



## Santiago Canyon College

BUSINESS AND CAREER EDUCATION

Land Surveying & Mapping

Become more than a button pusher!



Thunderstorms - beware of lightning and flash flood risk. Flash floods can travel dozens of miles from areas getting rain.

Heat - be sure field staff have plenty of water and know the warning signs of heat exhaustion and heat stroke.

Back to School - watch out for kids on their way to or from school. Stop for school bus red lights.

### IN THE NEWS...



#### **Congratulations Kate Anderson, PLS new City and County of San Francisco Surveyor**

The Public Works Department announced the appointment of Kate Anderson as San Francisco's new County Surveyor. She also will oversee mapping and subdivisions for the department. Anderson is the first woman to serve in the post since San Francisco became a California county in 1850.

The County Surveyor plays an important role in housing production through the approval of projects that reconfigure land ownership and create new condominiums. The role is especially critical to the creation of new neighborhoods and the remaking of old ones, such as Mission Rock and Treasure Island. Public

Works manages San Francisco's official map.

[READ MORE](#)

#### **Congratulations Brian Mundia, PLS new Survey Supervisor at LA DPW**

Mundia has previously worked for the Moran Consulting Corporation and D. Woolley & Associates. He will continue his Adjunct Professor of Survey and Mapping Sciences at Santiago Canyon College. Brian holds a Bachelor's degree in Business Administration from California State University, Fullerton.



#### **Congratulations William "Bill" Froman, PLS Transportation Surveyor Party Chief Caltrans, D7**

Froman was recently promoted to TSPC in the Ventura Field Office of Caltrans District 7. He has previously worked for The Keith Companies, Benner and Carpenter, Jensen Design and Survey, Caltrans North Region in Ukiah, the County of Ventura and Caltrans District 7. Bill studied Survey and Mapping Sciences at Santiago Canyon College.



## Royal Institute of Chartered Surveyors Mourns Queen Elizabeth II Passing

RICS express their deepest sadness and condolences at the death of Her Majesty Queen Elizabeth II.

Ruling for longer than any Monarch in British history, her lifelong devotion and commitment to public service as Sovereign for the UK and Commonwealth will never be forgotten.



Having just celebrated her Platinum Jubilee earlier this year, the public were reminded of her selfless commitment to her role as both a unifying and steadfast figurehead throughout seven decades of change.

Her Majesty the Queen was the longest serving patron of RICS, and we had the privilege of welcoming her to the RICS London Headquarters to mark our 150-year celebration in 2018. During her visit, the Queen toured the building and met members of the profession – a truly momentous occasion for all involved. Her presence on this day and her unwavering commitment to her RICS patronage will remain a special and important part of our history.

Their heartfelt sympathies lie with the Royal Family at this time of mourning.

[READ MORE](#)



### Safety Reminders

Although the temperatures are falling in some parts of the state, please still watch for signs of heat illness. Even temperatures in the 80s and 90s can cause issues for some people.

Additionally, school is back in session for most of the state so watch for children and increased traffic near school zones. Avoid school and residential areas if possible.

### EarthPro Land Surveying named 'Business of the Month'

EarthPro Land Surveying is the Madison County (Georgia) Chamber "Business of the Month." This is the second time that the Harvin family has been selected for this honor with Iron Pin Ranch selected last December. "The common denominator: a family owned and operated business that excels in their field (literally) and makes a meaningful local impact," said Chamber director Anna Strickland. EarthPro will celebrate 15 years in business February of 2023. Based in Madison County, EarthPro operates in five southern states and is one of the only regional land survey businesses based in Georgia. The Harvins are active in the Chamber's Agricultural Promotions Committee, the Madison County Young Professionals, and the Madison County Women's Business Connection. "EarthPro is also graciously sponsoring our sold out Women's Business Connection Luncheon on Aug. 30th," said Strickland.

[READ MORE](#)

### Consider the Importance of California's Right of Entry law

Surveyors who were hired by a company that wants to build a carbon capture pipeline across Iowa are running into opposition when they try to gain access to some properties in northeast Iowa. Delaware County Supervisor Shirley Helmrichs says at least 18 property owners or residents called the sheriff's office last week with complaints about survey crews trespassing on their land — but their claims had to be rejected.



"If the surveyors come out and go on their property, by Iowa code, it is not deemed trespassing," Helmrichs says, "but the landowners can say, 'We're not going to allow you on,' and that sends them back to get a court-ordered injunction, then they can go on."

Helmrichs says most residents she's heard from are barring the pipeline surveyors from entering their property. "So far, I've just heard of one landowner that did give them permission to come on," she says. "The rest are saying, 'Go get your injunction.'" Landowners are voicing concerns over eminent domain, loss of quality farmland, the mission of this project, and safety.

[READ MORE](#)

### **Drones help Fiji Ministry of Lands Survey Unreachable Places**

The Ministry says drones were introduced to the Ministry in 2017 to obtain imagery for detailed mapping and monitoring which will help in the Ministry's work in dealing with land leases, and other issues relating to land.

The benefit of drones for the Ministry of Lands is that it saves money, time, and effort by using less manpower, and time in getting the job done quicker compared to conventional methods and efforts by reaching unreachable places.

The Ministry of Lands officers usually visit rugged terrains to conduct land surveying and the availability of drones helps a lot in covering these areas.

There are currently six qualified drone pilots within the Ministry of Lands and Mineral Resources. Two more Air Survey Officers from the Geospatial Information Management Division obtained their drone license this month to help in the work of the Ministry.

[READ MORE](#)

---

### **CERN is Hiring a Land Surveying Technician**

TAs a land survey technician you will be in charge of the topographic surveys required for new projects, the setting out of new buildings, and other specific works like cubature work monitoring (auscultation). You will as well be responsible for the replies to DICT (Declaration d'Intention de Travaux) and more generally of the underground network datasets.

You'll work in close collaboration with the other members of the Geomatics and with the Civil engineering work teams.

At CERN, the European Organization for Nuclear Research, physicists and engineers are probing the fundamental structure of the universe. Using the world's largest and most complex scientific instruments, they study the basic constituents of matter - fundamental particles that are made to collide together at close to the speed of light. The process gives physicists clues about how particles interact, and provides insights into the fundamental laws of nature.

[READ MORE](#)

---

### **What do Conflicting Commands or Directions do to Your Staff?**

25 years ago, the Global Surveyor began orbiting Mars from pole to pole. It spent a year and a half dipping deeper into the upper atmosphere to sculpt its orbit, commencing full science operations in early 1999.

The craft mapped all of Mars many times over. That allowed scientists to study changes on the surface caused by winds, meteorite impacts, and outbursts of water or gases from below the surface. It also watched the weather. Its pictures showed frontal systems, dust storms, and cloud formations.

And the probe measured Mars's gravitational and magnetic fields, revealing details about its interior. Global Surveyor's original mission called for one Mars year of observations — about two Earth years. It was given three extensions, each for another Mars year. But on November 2nd, 2006, it went silent. The craft had received conflicting commands from Earth, which knocked it out. Even so, Global Surveyor survived longer than any Mars craft ever had — beginning an unbroken presence at Mars that seems likely to continue for years.

[READ MORE](#)

---

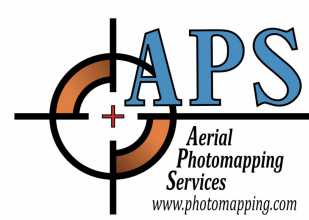
### **Ghana to Host 2024 FIG Working Week**

The Deputy Minister for Lands and Natural Resources responsible for Lands and Forestry, Mr Benito Owusu-Bio, has wooed surveyors around the world to the 2024 International Federation of Surveyors Conference (FIG) scheduled to take place in Accra.

The Deputy Minister, who is attending the 2022 International Federation of Surveyors Conference (FIG Congress) underway in Poland, said Ghana has made significant strides in innovative Land Administration, Geospatial Information, and Surveying practices; as a result, Ghana has a lot to offer the survey profession, adding that their visit to the nation would not only provide wonderful sight-seeing opportunities but also teach important lessons that can be applied in their home countries.

[READ MORE](#)

**Thank You CLSA Sustaining Members**



Steve Leja  
P.L.S. 5933

Telephone (909) 797-3043  
Cell (909) 709-6861 • Fax (909) 797-3876  
13642 Highland Oaks Dr. • Yucaipa, CA 92399

Complete Hydrographic Survey Solutions

- Hydrographic Instruments
- Unmanned Survey Vessels
- Software
- Support

(530) 677-1019 | [seafloorsystems.com](http://seafloorsystems.com) |  
4415 Commodity Way | Shingle Springs, CA | 95682 |



VISIT OUR WEBSITE

FULL EVENTS CALENDAR



California Land Surveyors Association | 2520 Venture Oaks Way, Suite 150, Sacramento, CA 95833

[Unsubscribe kim@californiasurveyors.org](mailto:kim@californiasurveyors.org)

[Update Profile](#) | [Constant Contact Data Notice](#)

Sent by [clsa@californiasurveyors.org](mailto:clsa@californiasurveyors.org) powered by



Try email marketing for free today!