

## IN THIS ISSUE...

- A MESSAGE FROM THE PRESIDENT
- 2022 NATIONAL SURVEYORS WEEK
- WELCOME OUR 2022 CLSA OFFICERS
- CLSA LOSES FRIENDS
- SAN DIEGO CHAPTER LS REVIEW CLASS
- KIDS CANCER CONNECTION
- NGS GPS ON BENCHMARKS -- 2022 KICKOFF!
- IN THE NEWS

## A MESSAGE FROM THE PRESIDENT



Hello everyone! I'm pleased to begin my duties as CLSA President this year with a message in the eNEWS.

The Board of Directors had a productive meeting on February 5th. Among the highlights was discussion about joining the National Society of Professional Surveyors. We heard from the newly-installed Executive Director, Tim Burch, who spoke about the benefits of a national voice – particularly with respect to lobbying in Congress on behalf of surveying issues. A draft Memorandum of Understanding

was distributed to the Directors to take back to the Chapters and provide feedback at our April Board meeting.

I am busy confirming Committee Chair assignments, and renewing charges for each component. These are the workhorses for our Association, and feel free to reach out to the Central Office if you have an interest in contributing your efforts.

The fourth week of March is *National Surveyors' Week*. If you feel inclined, please reach out to your local public surveyors to see about scheduling a proclamation by your City Council or Board of Supervisors. It is a great way to publicize the achievements that land surveyors provide to the community.

I am eagerly looking forward to the multi-state conference being held at the end of March in Las Vegas. After a two-year hiatus from in-person meetings, it looks to be a well-received break from the virtual reality to which we have become accustomed.

Warren D. Smith, LS

## 2022 National Surveyors Week



Global Surveyor of the Year 2022  
Benjamin Banneker

March 20-26  
nsp.s.us.com

Global Surveyors' Day: March 21



### How will you and your organization promote our profession for National Surveyors' Week?

National Surveyors' Week is March 20 -26 2022. The National Society for Professional Surveyors (NSPS) offers three goals of public awareness:

1. Education of the public
2. Public media
3. Public service

For me, the week will be spent in public service through the GPS on Benchmarks program. GPSONBMs directly benefits all surveyors by updating information on benchmarks and control points, and will help provide a better transition to new geometric and geopotential datums. It also provides opportunity for surveyors to speak to the public about what we do.

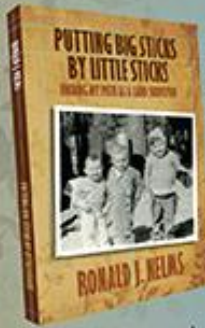
There are myriad ways to make progress on the three goals. Many involve talking with people in your community, which can be rewarding in itself. The NSPS website has some information on how to get involved: [National Surveyors Week - National Society of Professional Surveyors \(nsps.us.com\)](http://nsps.us.com)

*Ask not what your profession can do for you – ask what you can do for your profession.*

## PUTTING BIG STICKS BY LITTLE STICKS

### FINDING MY PATH AS A LAND SURVEYOR

"There is an everyman reality to this inspirational story of perseverance, triumph and humility."  
Carl C De Baca



Follow Ron Nelms as he takes us back in time, and join him on his intimate and inspiring journey, through a life of challenges and successes, setbacks and triumphs, on his personal and professional path to becoming a successful Land Surveyor.

In this familial autobiographical memoir, Ron reminds us that our successes and achievements in life are the result of hard work, perseverance and above all, following your passion.

Order your copy at:  
<https://store.bookbaby.com/book/putting-big-sticks-by-little-sticks>

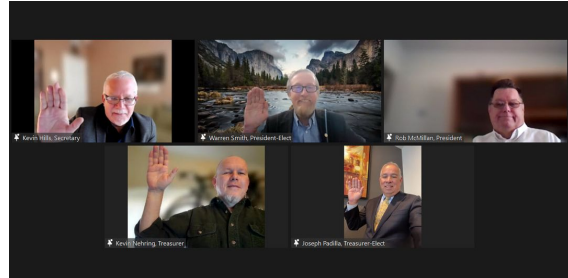


Ron is a well known and respected, passionate Land Surveying professional, licensed in three States. He currently resides in Bakersfield, California, where he leads Nelms Surveying, Inc.

## NGS GPS ON BENCHMARKS -- 2022 KICKOFF!

Now that NGS has officially extended the GPSONBM Campaign's cut-off date until December 31, 2022, there's time to get out there to fill remaining data gaps. Partners are encouraged to collect and submit GPS data to NGS for use in developing products to be launched with the

## WELCOME OUR 2022 CLSA OFFICERS



At the most recent CLSA Board of Directors meeting on February 5, 2022, the Executive Committee for 2022 was announced. Let's welcome them!

- President - Warren Smith
- President-Elect - Kevin Hills
- Secretary - Kevin Nehring
- Treasurer - Joseph Padilla
- Immediate Past President - Robert McMillan

## CLSA LOSES FRIENDS

### CLSA PAST PRESIDENT, ROBERT W. CURTIS, PLS 3216

We are saddened to share the news of the passing of Robert W. Curtis, PLS 3216. Bob served as CLSA's President in 1970 and 1971. He was also one of CLSA's Charter members. Click here to read the obituary for Bob and his wife, Diane.



[READ MORE](#)

### KENNETH E. CARR

With loving and heavy hearts, we share the news of Ken Carr's passing on January 25, 2022. He stoically managed cardiac disease and other health issues for over a decade, and his big, giving heart couldn't continue at 79 years young. He was lovingly surrounded by his immediate Sonoma County family.



[READ MORE](#)

## SAN DIEGO CHAPTER LS REVIEW CLASS

\*THE COST IS FREE, BUT WE PLEASE ASK FOR ANY AMOUNT OF DONATION. TO SIGN-UP AND RECEIVE THE VIRTUAL MEETING LINK WITHOUT A DONATION,

[CLICK HERE FOR DETAILS](#)

## PUBLICATIONS

2021 publications are now half off in the CLSA Store. We are also accepting pre-orders for 2022 publications.

- 2021 PE Act and PLS Act with Board Rules
- 2021 Complete Package with DVD
- 2021 Subdivision Map Act & Index

[CLICK HERE](#)

## ARTICLE & PHOTO SUBMISSIONS FOR CALIFORNIA SURVEYOR MAGAZINE

Do you have a photo from your field work that would make a great magazine cover? Do you have an idea for an article or have you written an article that you'd like us to consider including in the next issue? Please send your submissions and ideas to California Surveyor Editor, [Joseph Waltz](#).



PLEASE CHOOSE \$0.00 AND PROCEED THROUGH CHECKOUT. THE DONATED MONEY GOES DIRECTLY INTO PROGRAMS LIKE THIS LS REVIEW, LOCAL COLLEGE SURVEY COURSES AND YEARLY EDUCATION SCHOLARSHIPS TO SURVEYING STUDENTS.

REVIEW HOSTED VIA VIRTUAL PLATFORM. SCHEDULE AND PRESENTERS ARE SUBJECT TO CHANGE:

2/3 - 6:30-9pm - Kickoff/Sub Map Act/PLS Act - Goebel/Mellom  
2/10 - 6:30-9pm - Legal Descriptions - Purvis  
2/17 - 6:30-9pm - Public Lands PLSS - Adams  
2/24 - 6:30-9pm - Public Lands PLSS - Adams  
3/3 - 6:30-9pm - Public Lands PLSS - Adams  
3/10 - 6:30-9pm - Boundary - TBD  
3/17 - 6:30-9pm - Boundary - TBD  
3/24 - 6:30-9pm - Photogrammetry/Construction - Nicolau IV  
3/31 - 6:30-9pm - Riparian - Kruger  
4/7 - 6:30-9pm - Coordinates/GNSS/GPS/Geodesy - Satalich

[READ MORE](#)

## KIDS CANCER CONNECTION

Kids Cancer Connection (KCC) is an IRS 501(c)3 non-profit organization that offers programs and services to children and their families. KCC also manages the Kids Cancer Connection Family House, located in Woodland Hills, CA. We offer temporary housing (at-no-cost) to out-of-area families with a child receiving medical treatment at area facilities. We provide housing, meals, transportation and activities as many of these families have limited resources. As we continue to grow we are interested in expanding the KCC Family House. We are looking to build an addition to the lower level of the the two story hillside residence. We are seeking the pro-bono support of a surveyor to help us develop boundary and topography surveys to proceed with work at the KCC Family House.

Please contact Steven Firestein at [acfkids@earthlink.net](mailto:acfkids@earthlink.net) for details.

## NSPS - STOLEN EQUIPMENT REGISTRY

Reminder - NSPS provides a registry of stolen equipment. [CLICK HERE TO LEARN MORE](#)

## [COURTHOUSEDIRECT.COM](#)



Offers a \$.07 per page discount and will automatically donate \$.10 per page to CLSA when members download courthouse documents through this website. These instruments include Deeds, Easements, Rights-of-Way, Releases, Liens, etc.

## OFFICE DEPOT DISCOUNT

## IN THE NEWS...

### ACR-142 INTRODUCED BY ASSEMBLY MEMBER PATTERSON

ACR-142 has been introduced by Assembly Member Patterson. This measure would designate a specified interchange of State Highway Route 168 in the City of Clovis as the Dr. Fareed Wade Nader Memorial Interchange.

### [CLICK HERE to view the proposed Assembly Concurrent Resolution](#)

The CLSA Education Foundation was established in 1993 and is committed to supporting land surveying students and programs. Last year over \$50,000 in scholarship aid was provided to land surveying students.



Donating to the Education Foundation is easy! Click [HERE](#) to donate via PayPal.

Thank you to everyone who clicks through to Amazon through the CLSA's Education Foundation Amazon Smile account! If you're not doing so already, please shop on Amazon with [this link](#).



**PROGRAM**



Save up to 60% on your office supplies. Click on the Office Depot Logo to begin utilizing the CLSA-Office Depot Discount Program. If you do not know your username and password, or for more information, contact the CLSA Central Office.

Western Regional Survey Conference

**MAPPING THE PATH FOR THE NEXT GENERATION**

MARCH 30 - APRIL 2, 2022

**Don't miss the bowling FUNdraiser**

(at the Western Regional Survey Conference)

**Friday, April 1, 2022  
6:00pm**



The Orleans Bowling Center | 4500 W. Tropicana Ave. | Las Vegas

[REGISTER FOR BOWLING HERE](#)

CLICK HERE ORDER TODAY

**FUNDAMENTALS OF SURVEYING: EXAM STUDY COURSE**

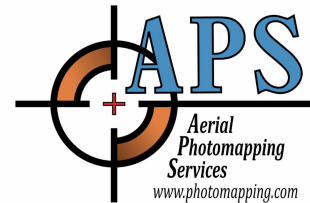
Over 16 hours of videos and manual

Member Price - \$199

Topics included are based on the current NCEES Fundamentals of Surveying (FS) exam specifications and recommended knowledge.

Presenters: Dane Courville, PLS and Knud Hermansen, PLS, PE, Ph.D.

**Thank You CLSA Sustaining Members**



- Hydrographic Instruments
- Unmanned Survey Vessels
- Software
- Support

(530) 677-1019 | seafloorsystems.com | 4415 Commodity Way | Shingle Springs, CA | 95682 |

[VISIT OUR WEBSITE](#)

[FULL EVENTS CALENDAR](#)

