

IN THIS ISSUE...

- A MESSAGE FROM THE PRESIDENT
- GOVERNOR NEWSOM APPOINTS CHRISTINA W.H. WONG
- NSPS 21st ANNUAL STUDENT COMPETITION
- CLSA LOSES FRIEND, ARTHUR W. COLVIN, JR., LS 6112
- IN THE NEWS

A MESSAGE FROM THE PRESIDENT



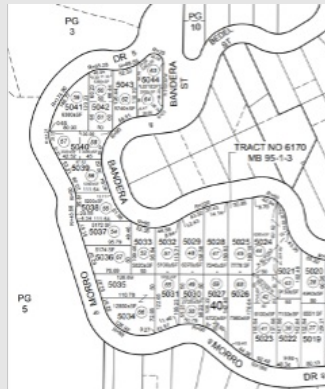
Fall is in the air and CLSA is approaching another on-line Board of Directors meeting. For those of you not keeping score, we hold four Board meetings throughout the year. In an effort to

reduce CLSA expenses, we have been holding two of the quarterly meetings in a virtual format each year. Due to COVID-19 of course, most of our meetings following the February 2020 meeting have been virtual, with the July 2021 meeting held as a hybrid. The November 6, 2021 meeting will be in the Zoom format. Please ensure that your Chapter reviews the meeting agenda when it is published, and that issues of importance to your membership are addressed. At this time, we are expecting to hold our February 5, 2022 meeting in person at the Holiday Inn Oakland Airport. Please plan to attend.

On October 1, 2021, CLSA's Directors and Officers participated in a webinar to review and discuss the CLSA Annual Member Survey which was completed just before the July Board of Directors meeting. There were 361 responses to the survey, with a 60 – 34 – 6% split between "Private" "Public Agency" and "Other" employment. Roughly 2% of respondents (both Private and Public) had 6-10 years of experience, and nobody with 5 or fewer years participated in the survey. Private sector experience percentages of 16, 26 and 56% represented the 11 to 20, 20 to 30 and over 30-year experience groups. Public Agency percentages were surprisingly 35, 24 and 39% for the same experience ranges. Salary scales indicated 90% made over \$80,000 per year, with 78% making over \$100,000. 10% of respondents had no employer provided benefits, while 80% had medical insurance.

47% of respondents expected to increase staffing levels this year, with 50.6% remaining the same. Only 2.3% expected a reduction in staffing. The top four challenges identified by respondents were all related to staffing: Difficulty finding qualified staff; Succession planning and finding/training the next generation; Too much

KCC also manages the Kids Cancer Connection Family House, located in Woodland Hills, CA. They offer temporary housing (at no cost) to out-of-area families with a child receiving medical treatment at area facilities. KCC provides housing, meals, transportation and activities to these families as many of these families have limited resources. They plan to expand the KCC Family House with an approximately 400 to 450 square foot addition to the lower level of the two story hillside residence where there is currently a deck.



At this time, KCC is seeking pro-bono support from a local land surveyor providing a boundary and topographic survey. This is an opportunity to work side-by-side with other generous

industry professionals who are donating their expertise. Perhaps this could be done as a Chapter Project, by assembling a volunteer team, or by an individual firm. This effort affords additional chances for outreach, exposure and recruitment by bringing in students from local high schools or community colleges as volunteers. Those interested can contact KCC Director Steven Firestein at (818) 456 6167 or through the website mentioned above.

If you have considered doing a [GPS on BMs](#) observation, now is the time! The deadline for data collection is December 31, 2021. Please coordinate your efforts with John Tosto using the [gpsombms@californiasurveyors.org](mailto:gpsonbms@californiasurveyors.org) email. I suspect Steve Martin is still out in front of others on the number of stations he has visited, but Ned Salman has been getting in a few in picturesque locations.

work; and Ability to retain qualified staff. The percentages associated with these issues were 69, 53, 45 and 34% respectively. Follow-up questions provided correlation to the challenges identified above. Only 13% of respondents say 50% or more of their survey technicians have formal land surveying education. Only 19% of the respondents say more than half of their staff will attempt to become professional land surveyors. 64% do not require an LSIT for higher level positions such as party chief or office equivalent, and 43% of respondents had zero LSITs in their office. If you are not requiring an LSIT to move up, then how are you addressing succession planning and finding & training the next generation? 70% of the respondents run 1-person survey party at least some of the time. How is training taking place? Perhaps "How" is redundant...

One of CLSA's cornerstones is Legislation, however nearly 70% of respondents felt existing legislation as it pertains to land surveying is adequate. Perhaps not considered, but mentioned many times over the last several years, is that NGS will be releasing the next iteration of the National Spatial Reference System (NSRS) in the near future. This alone will require detailed crafting of revisions to the California Public Resources Code (PRC) Sections 8801, et seq. (I love it when I can throw an "et seq." into something...) We must also continue to move forward sound proposals and remain vigilant to new legislative threats through performing bill analysis and advocacy.

Additional questions related specifically to CLSA operations identified the need for improved communications. Steps are already being taken to facilitate CLSA Board of Directors information sharing through the *CLSA eNews* following each Board meeting. A desire for additional CLSA services was also noted. Specifically, respondents asked for additional webinars (53%), monument preservation outreach (51%) public awareness (45%) and educational outreach (43%). Each of these are being addressed to some extent by CLSA committees. If one or more of these items are of particular interest to you, please reach out to the committee chair or your local Chapter Officers with your ideas and commitment to help.

Speaking of Chapters, they are the critical interface for our profession at the local level. Information is shared, ideas are discussed at a preliminary level, knowledge is transferred, and personal relationships are established and improved. Unfortunately, despite the multiple opportunities to attend numerous meetings throughout the state in an on-line setting, over 50% of respondents attended no meetings in the year before the survey. Only 35% indicated they had even attended 1 to 5 meetings. Your membership and participation at the Chapter level is critical to both our local and state operations and efforts.

One of the things that CLSA can accomplish at a local level is outreach and community service. The opportunity to do so in the Los Angeles area is available now to those interested. The Kids Cancer Connection (KCC) is a 501(c)3 non-profit

Plan your 2022 calendars for the IN-PERSON 2022 Conference. It will be held in Las Vegas, NV March 30 - April 2, 2022. The theme is *Mapping the Path for the Next Generation*. I suggest attendees plan to arrive on the 29th, as the conference will start on the morning of the 30th. Certain usual suspects will likely have informal receptions in various suites throughout the conference. As mentioned previously, this will be a four-state (CA, AZ, NV, UT) plus West Fed conference, so a great turnout is anticipated, thus it will be an opportunity to improve your abilities and reconnect with old friends. Thanks go to CLSA Conference Committee Chair Rich Maher, President-Elect Warren Smith and Executive Director Kim Oreno -- our members of the joint conference committee.

Please remember, CLSA is a volunteer organization. Individuals contribute their time, energy and brainpower to achieve our mutual goals. Please do what you can, when you can, to improve the situation of the profession. It is up to all of us to help make a difference in our world. The familiar epilog follows:

Chapters, please continue recruiting new CLSA members. Licensees, LSITs, Technicians and others are all welcome. There is a membership level for any level of qualification. Individuals, companies, or corporations who, by their interest in the land surveying profession, are desirous of supporting the purposes and objectives of CLSA may also join as Sustaining Members.

If you are not a CLSA member, please recognize all the good that CLSA is (and CLSA members are) doing to benefit you in your day-to-day work and improve the profession as a whole. Please give back to the profession by joining CLSA and participating in the various efforts of importance to you.

Members, please reach out to others who are not currently CLSA members and invite them to join or re-join us. I challenge every member to bring in at least one new member. Every membership helps improve our situation adding additional funding, brainpower and enthusiasm. Increasing membership is critical to the success of our organization, and the well-being of our profession. Thank you for all your efforts.

Finally, I was recently made aware of the passing of Frances Vasquez due to COVID. Frances was the wife of one of our dear friends and colleagues, Bob Vasquez, PLS, of David Evans and Associates. Although I never met Frances, she was by all accounts a wonderful woman, wife, mother, and friend. A rosary will be held November 1 at 7 PM, with mass and burial the following day. Details are in the obituary [HERE](#). Her obituary concludes "To honor Frances' legacy, we ask that you tell her stories, be kind to everyone, take care of the children in your life, laugh until you cry, be there for your family, have true faith in God, be creative, make memories, tell your loved ones you love them and have a childlike wonder in life." Good rules to follow...

Keep yourselves and your people safe.

organization. KCC provides a variety of local and nationwide programs and services to children and their families to help them through the challenges of childhood cancer. See the [KCC Website](#) for more information.

Robert M. McMillan, PLS, EIT
RobPLSCA@gmail.com

ALLEN

BUSINESS ADVISORS

ENGINEERING AND LAND SURVEYING BUSINESSES FOR SALE

Governor Newsom Appoints Christina W.H. Wong to Board for Professional Engineers, Land Surveyors and Geologists

Christina W.H. Wong, 54, of Chico, has been appointed to the Board for Professional Engineers, Land Surveyors and Geologists. Wong has been Senior Program Coordinator at the Glenn County Health and Human Services Agency since 2002. She was a Mental Health Therapist at the Butte County Probation Department from 2008 to 2020. Wong was a Master of Social Work Coordinator for the School of Social Work at the University of Alabama from 1993 to 1997. She was Dean of Student Affairs at Hong Kong Shue Yan University from 1993 to 1997. Wong earned a Master of Social Work degree from the University of Hull. She is a member of the National Association of Social Workers. This position does not require Senate confirmation and the compensation is \$100 per diem. Wong is a Democrat.

[READ MORE](#)

NSPS 21st ANNUAL STUDENT COMPETITION

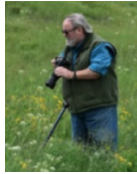
NSPS 21st Annual Student Competition Held by NSPS in conjunction with The NSPS Young Surveyors Network



March 30 – April 1, 2022 | Arlington, VA

The 2022 NSPS Student Competition will be held in conjunction with the spring meeting of the National Society of Professional Surveyors. This year's competition will only include field exercises in order to lessen the workload for students and faculty. There will be no work required to be performed outside of the competition although preparations and training may be deemed necessary by the individual faculty.

[CLICK FOR DETAILS](#)



CLSA LOSES FRIEND, ARTHUR W. COLVIN, JR., LS 6112

December 13, 1949 - September 21, 2021

[READ MORE](#)

CLSA STORE - 2021 PUBLICATIONS AVAILABLE

- 2021 PE Act and PLS Act with Board Rules
- 2021 Complete Package with DVD
- 2021 Subdivision Map Act & Index

[CLICK HERE](#)

IN THE NEWS...

Apple Maps team members use high tech backpacks to improve mapping of Canadian cities

If you were looking for the scoop on the new iPhone 13, you may have seen the article in the MacRumors website about Apple improving it's "Look Around" feature. The "specialized camera-equipped backpacks" are used to augment vehicle based mapping platforms. Backpack efforts began on September 11th in Montreal, Vancouver, Toronto, and the Durham region east of Toronto. Various location in the U.S. have already been mapped. Image by Apple.



[READ MORE](#)

ARTICLE & PHOTO SUBMISSIONS FOR CALIFORNIA SURVEYOR MAGAZINE

Do you have a photo from your field work that would make a great magazine cover? Do you have an idea for an article or have you written an article that you'd like us to consider including in the next issue? Please

Star Surveyors of Friday Harbor (WA) becomes a

send your submissions and ideas to California Surveyor Editor, [Joseph Waltz](#).

NSPS - STOLEN EQUIPMENT REGISTRY

Reminder - NSPS provides a registry of stolen equipment.

[CLICK HERE TO LEARN MORE](#)

[COURTHOUSEDIRECT.COM](#)



Offers a \$.07 per page discount and will automatically donate \$.10 per page to CLSA when members download courthouse documents through this website. These instruments include Deeds, Easements, Rights-of-Way, Releases, Liens, etc.

OFFICE DEPOT DISCOUNT PROGRAM



Save up to 60% on your office supplies. Click on the Office Depot Logo to begin utilizing the CLSA-Office Depot Discount Program. If you do not know your username and password, or for more information, contact the CLSA Central Office.



The CLSA Education Foundation was



established in 1993 and is committed to supporting land surveying students and programs. Last year over \$50,000 in scholarship aid was provided to land surveying students.

Donating to the Education Foundation is easy! Click [HERE](#) to donate via PayPal.

Thank you to everyone who clicks through to Amazon through the CLSA's

Women Majority-Owned business

Congratulations to Kimberly Bourns, PLS who joined the firm as Co-Owner with long-time owner Robert M. Anderson, PLS. Star Surveying provides surveying services in the San Juan Islands region.

[READ MORE](#)

North Carolina Deputies make arrests and recover stolen equipment

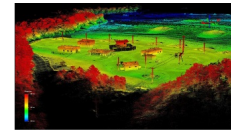


Finally some good news about stolen survey equipment, although it is on the opposite coast. A multi-county theft ring was broken up by Buncombe County Sheriff's Office (BCSO). The recovery is said to be the largest in at least a decade in their Buncombe County. The thieves stole construction and landscaping tools and supplies, as well as firefighting and survey equipment and catalytic converters. U.S. Marshalls assisted in taking the suspects into custody. Image by BCSO.

[READ MORE](#)

Better late than never – U.S. Army and NGA, August 2021

Representatives from the National Geospatial-Intelligence Agency (NGA) research team met with U.S. Army Training and Doctrine Command to demonstrate LiDAR survey data collection capabilities at Fort Leonard Wood, MO. As the Army adopts LiDAR technology, those being trained in its use and data extraction can help fill our ranks as they transition from military to civilian employment.



[READ MORE](#)

Advanced Surveying and Professional Services to assist Arbor Metals Corp. with project

According to *TheNewswire*, surveying firm Advanced Surveying and Professional Services has been engaged to complete the technical review and assist in the acquisition of a prospective lithium brine project in Clayton Valley, NV.

[READ MORE](#)

Promotions announced at Up-state NY engineering and land surveying firm

Ravi Engineering and Land Surveying announced the promotions of Sean Baldwin and Dave Honnick to key leadership positions in the land surveying group. Baldwin will expand his responsibilities as department manager, overseeing design survey and construction survey groups. Honnick will assume responsibilities as vice president. Announcements of promotions within your firm or agency could be featured here next month!

[READ MORE](#)

Private-equity firm Peak Rock Capital has

Education Foundation Amazon Smile account! If you're not doing so already, please shop on Amazon with [this link](#).

acquired surveying and mapping SAM Companies

The SAM Companies, an Austin, TX based multi-disciplinary firm employing over 1,000 people has been acquired by Peak Rock Capital. The move is intended to help accelerate growth and geographic expansion. SAM is already the largest combined geospatial solutions and construction services provider in the U.S.A.

[READ MORE](#)

Time is running out!

Sign-up for CLSA San Diego Chapters biggest Golf Tournament Fundraiser

[REGISTER](#)

In case you were wondering “How Much Does a Land Survey Cost?” Bob Villa answers!

While the internet can provide the extremes of information, this BobVilla.com post is a combination of both. It contains great advice such as “Determining property lines can help prevent future animosity by ensuring that you or your neighbors don’t erect a fence or other structure on the wrong side of the line” and “Your location will also affect land survey costs.” At the other end of the spectrum is their published range of pricing for land surveys, indicating “costs range between \$346 to \$680, with an average of \$504.” While these number seem far out of touch with reality to me, perhaps things are done much differently in the Northeastern US. Unfortunately, the average homeowner may look at information from the former host of This Old House and other television programs as gospel.

[READ MORE](#)

Surdex Corporation surveying and mapping aircraft in Wisconsin in fatal crash

On September 28th, 2021 a twin turboprop Rockwell Commander 690B crashed into a swamp killing all three aboard approximately 150 miles northwest of Greenbay, WI. What is known is that they were on an forest vegetation aerial imagery mission for the Wisconsin Department of Natural Resources. The aircraft was flying straight and level at 15,600 feet, slowed, and abruptly turned to the right, descending rapidly in a spin until impact in a swamp. The accident is under investigation by authorities, but there is much conjecture as to the probable cause.

[READ MORE](#)

SEVEN STATES
ONE VIRTUAL CONFERENCE
MAGNIFICENT OPPORTUNITIES



2021 Conference
Recordings For
Sale Online

Thank You CLSA Sustaining Members



Berntsen[®]
Marking the Infrastructure of the World™

BizWatt



LEJA SURVEYING CORP.

Land Surveying & Mapping • Court Diagrams
Legal Descriptions

Steve Leja
P.L.S. 5933

Telephone (909) 797-3043
Cell (909) 709-6861 • Fax (909) 797-3876
13642 Highland Oaks Dr. • Yucaipa, CA 92399

McPheeters & Associates

LAND SURVEYING

MERIDIAN SURVEYING
ENGINEERING, INC.

SURV-KAP[®]
The landmark name in survey products



TAIT
RISING TO THE CHALLENGE



Seafloor[™]

Complete Hydrographic Survey Solutions

- Hydrographic Instruments
- Unmanned Survey Vessels
- Software
- Support

(530) 677-1019 | seafloorsystems.com |
4415 Commodity Way | Shingle Springs, CA | 95682 |

That CAD Girl

VISIT OUR WEBSITE

FULL EVENTS CALENDAR

