

IN THIS ISSUE...

- PRESIDENT'S MESSAGE
- CLSA SWEARS IN NEW OFFICERS
- SANTIAGO CANYON COLLEGE -- SURVEY MAPPING IN CIVIL 3D
- BPELSG WORKSHOP
- CALTRANS DISTRICT 9 (BISHOP) IS HIRING
- NSPS 2019 MAP PLAT DESIGN COMPETITION
- STOLEN SURVEY EQUIPMENT
- UPCOMING EVENTS

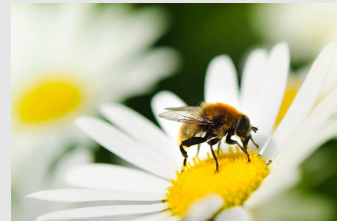
A MESSAGE FROM THE PRESIDENT

Time to get involved!

Greetings from your Executive Committee!

We had our first Board meeting on February 2. That means this year's executive team is now fully formed with our officers and members at large elected and installed. We look forward to serving you this term.

This year the executive team will plan to meet once a month. We will share our month agenda with your Chapter Directors directly. If you have an interest that you would like to see addressed, please contact them as your representatives. Members are our focus. Your ideas, suggestions, and concerns are what we are here to represent.



Committees are the backbone of this organization. Their work on the sidelines between Board meetings allows the Association to move forward on issues. Committee members are needed to make that function work as it should. If you have an interest that you would like to see moved forward, chances are there is a committee that works on that subject. Get involved! Our association works when we contribute our individual time and talents for the betterment of our profession. Check out our [committee page](#) on our website for information and chair contact information.

Thank you for being a member! It is the very nature of associations that the members are the foundation of all that we do. It is by the strength of membership that the association can represent your interests. It is my goal this year to see that your participation is of value to you. I hope you will be able to communicate this value to fellow professionals and encourage them to become part of our organization. Your bringing just one new member this year can have a far-reaching affect. The increase will allow for better representation of your local concerns by increasing your Chapter representation at the Board of Directors and the increase in overall membership will allow the association to have better influence in its endeavors.

Annette Hovorka
CLSA President 2019



CLSA SWEARS IN NEW OFFICERS

The CLSA held a Board of Directors meeting on Oakland on Saturday, February 2, 2019. During this meeting, the new 2019 officers were sworn in. Congratulations!

Pictured from left to right:
Immediate Past President - Ron Nelms
Secretary - Rob McMillan
Treasurer - Warren Smith
President - Annette Hovorka
President-Elect - Keith Spencer

MAPPING IN CIVIL 3D

This advanced course will instruct students in the use of and capabilities of Computer Aided Drafting (CAD) software. The major emphasis is on survey law, drafting using templates and producing maps for agency submittals and work plans for use in both the office and field environments. The course is specifically intended for students with land survey training or experience and anyone who wants to learn how to prepare maps that will record. Recommended preparation: Advanced Plane Surveying, CAD Fundamentals & Trigonometry.

[COURSE SYLLABUS](#)

[REGISTRATION FLYER](#)

BPELSG WORKSHOP

BPELSG is hosting workshops around the state to discuss Record of Surveys and Corner Record, submittal and review. The goal is to bring the submitting surveyor and the reviewing County surveyor closer together to produce a better map and process for the public.

The workshops will be for both the submitting surveyor's and the reviewers, we want to hear constructive ideas from all.

Please [CLICK HERE](#) for the flyer for the second RS workshop. It will be on February 22 in Sacramento. It is free and no registration required.



[CLICK FOR SURVEY](#)

This short survey will assist us in having a starting point for the workshops.

CALTRANS DISTRICT 9 (BISHOP) IS HIRING



Caltrans District 9 in Bishop, CA is looking for qualified persons to fill the positions listed below. Please follow the links listed for further information.

[Caltrans Transportation Surveyor](#)

[Caltrans Transportation Party Chief](#)

NSPS 2019 MAP PLAT DESIGN COMPETITION

State Surveying association affiliates of the National Society of Professional Surveyors, Inc. (NSPS) are invited to submit maps and plats to the 2019 competition. Entrants need not be members of NSPS, however a member of NSPS must sponsor the submission.



[ENTRY FORM HERE](#)

STOLEN SURVEY EQUIPMENT

Unfortunately the Santa Cruz office of Hogan Land Services experienced a break in and all of their survey equipment was stolen. No other items in the office were stolen in the process, so they feel that the burglars were well aware of their target. Below is a list of the equipment as well as their serial numbers. If you all could please keep an eye out that would be greatly appreciated. Please contact Thomas Reeder at treeder@hoganls.com with any information.

Topcon 3005w station-GPT-3000 serial #(0B1843)

Topcon 235 station-GTS-230 serial # (273781)

2 topcon batteries

Leica total station

4 leica batteries

Tds ranger data collector

Topcon lite plus gps unit-BASE- serial # (251-0418), ROVER- serial # (251-0657)

2 kenwood walkie talkies

Zeiss level station

UPCOMING EVENTS

CourthouseDirect.com

Offers a \$.07 per page discount and will automatically donate \$.10 per page to CLSA when members download courthouse documents through this website. These instruments include Deeds, Easements, Rights-of-Way, Releases, Liens, etc.

**Office Depot Discount Program**

Save up to 60% on your office supplies. Click on the Office Depot Logo to begin utilizing the CLSA-Office Depot Discount Program. If you do not know your username and password, or for more information, contact the CLSA Central Office.

The CLSA Education Foundation was established in 1993 and is committed to supporting land surveying students and programs. Last year over \$50,000 in scholarship aid was provided to land surveying students.



Donating to the Education Foundation is easy! Click [HERE](#) to donate via PayPal.

Thank you to everyone who clicks through to Amazon through the CLSA's Education Foundation Amazon Smile account! If you're not doing so already, please shop on Amazon with [this link](#).

[VISIT OUR WEBSITE](#)[FULL EVENTS CALENDAR](#)