

# The California Surveyor



VOLUME 1, NUMBER 2

OCTOBER, 1967

## A MESSAGE FROM YOUR ASSOCIATION PRESIDENT.....

Inasmuch as our membership is spread somewhat thinly over the length and breadth of our large state, it becomes increasingly apparent that our strength will necessarily stem from local chapter activities. One of the first and most important efforts to be made by a chapter is to actively work at acquainting non-members in their area with the aims of the Association and by so doing, increase the membership. It is a foregone conclusion that we will need a much larger membership of "working" people, if we hope to improve our professional status. By "working" people, I mean those dedicated persons who have ideas and are willing to push them. Another important activity of a chapter would be to make an effort toward acquainting the public with our objectives as an Association. Various methods could be used, such as offering to speak to potential surveyors in our schools, or to civic organizations, and an effort could be made to start Explorer Scout groups oriented towards surveying, such as Explorer Post 103 which the Sacramento Chapter has already sponsored.

Also send items of mutual interest to the Chairman of the Publications Committee for inclusion in a bigger and better Newsletter.

There is much work to be done and no one but ourselves to do it, so lets get at it. "Times a'wastin".

\*\*\*\*\*

## PROFESSIONAL COOPERATION.....

One of the most recent outstanding examples of professional cooperation and public service took place recently in the recovery and remonumentation of the San Bernardino Base and Meridian. Read about it in the June 67 issue of Surveying and Mapping and give a little thought with reference to your professional attitude.

## SECRETARY-TREASURER REPORTS.....

### Constitution and By-Laws Election:

The final tally of the election regarding the revision of the Constitution and By-Laws was made on June 30, 1967. The official result was **UNANIMOUS APPROVAL!** There were 82 ballots returned and this indicates a high rate of interest. However 13 of these ballots were not signed either on the outer or inner envelopes, so they could not be counted. In the future, please sign the outer envelope so we can check to see that only members are voting. The new sections are now officially a part of the Constitution and By-Laws and every member should by now have recieved a newly printed copy.

### Local Chapters:

The results of the election reported above are a very important step in the formation of our Association and should be a concern of each and every member. It means that each local Chapter will have one or more representatives on the Board of Directors, directly involved in the operation of the Association. It is at the local Chapter level where most of the beneficial work of a professional organization can be performed, and this will permit a much greater unity amongst all of us towards our common goals.

Information has been recieved from the following chapters fulfilling the requirements of the Constitution for Chapter Charters: Marin, Lake Mendocino, Sacramento and Sonoma Counties.

### A.C.S.M.

Earlier this year the Secretary-Treasurer was appointed by the Board of Directors to pursue the procedures for formal affiliation with the A.C.S.M. I am pleased to announce that we are now an **INSTITUTIONAL AFFILIATE** of the A.C.S.M. A copy of the Certificate of Affiliation will be mailed to any member who requests one.

## BOARD OF REGISTRATION

In accordance with a new policy of the Board of Registration, the Board is no longer publishing a newsletter. However the Association will from time to time receive items of interest from the Board which will be published in the California Surveyor. The following proposed changes in the Regulations have been received:

Amend Sections 407, 409, 410 and 445,  
Repeal Section 467,

407. Fees. (a) All fees required by provisions of the Code and Rules of the Board shall be transmitted by money order, bank draft or check, payable to the Director, Department of Professional and Vocational Standards, at Sacramento.

(b) The following is the prescribed application fee for:

(3) License as a Land Surveyor...\$40

(c) The following is the prescribed renewal fee, payable on or before June 30 of each even numbered year, for:

(3) License as a Land Surveyor...\$14

445. Land Surveyor Examination. (a) An applicant for license as a land surveyor will be required to take, and to pass, each division of the examination as described in Section 8745.5 of the Code.

(b) An applicant for license as a land surveyor who achieves a passing grade in one division of the examination, but not in the other division, will be exempt

(1) from the first division of the examination in all future examinations provided he has achieved a passing grade in the first division.

(2) from the second division of the exam-

### "THE CALIFORNIA SURVEYOR"

Published quarterly by the California Licensed Land Surveyors Association.

#### Headquarters

2087 Blucher Valley Road, Sebastopol, Calif  
95472

Chairman: James N. Dowden

3472 Buccaneer Circle  
Sacramento, Calif., 95826

Editor: Richard J. Coughlan

1629 Escalero Road  
Santa Rosa, Calif., 95405

ination in all future examinations provided he has achieved a passing grade in the second division.

(c) An applicant will be required to file the prescribed application and fee for each examination.

\*\*\*\*\*

### Land Surveying Examination

The examination schedule for the Land Surveyors examination is as follows:

Final Filing Date.....May 1, 1968

Examination.....August 9 and 10, 1968

\*\*\*\*\*

NOW is the time to start grooming your proteges. Perhaps your local Chapter could conduct a review course for applicants from your area.

\*\*\*\*\*

### STATE BOARD MEMBERSHIP

Your Association President, Fred Darby has suggested to Governor Reagan and the State Board of Registration that the California Licensed Land Surveyors Association participate in the selection of the new Land Surveyor member of the Board of Registration for Civil and Professional Engineers. The term of the present Land Surveyor member Mr. Donald E. Kister expires on January 15, 1968. It should be noted that Mr. Kister is a member of the C.L.L.S.A.

Several persons have been suggested to President Darby by the Directors, but if any member would like to suggest someone for this important appointment who has the qualifications and the willingness to serve, please send their names to president Darby or to the Secretary-Treasurer. The qualifications for a member of the Board of Registration are spelled out in the Professional Engineers Act, Chapter 7, Division 3. This is printed in the annual roster.

\*\*\*\*\*

### ERRATA

In the April issue of the California Surveyor an article entitled "Which Act Should Regulate Land Surveying Companies" was published. Credit for this article was incorrectly given to Gene Foster. The author was actually Gene Lafferty of Bakersfield. Sincere apologies!

## ANNUAL MEETING

With the time rapidly approaching for our Second Annual Meeting its a good time to look back at what we did during our first statewide convention. This may bring back pleasant recollections for those of us that were fortunate enough to be present and to those many new members we hope to whet your interest so that you will find your attendance at the "Second" a MUST!

\*\*\*\*\*

The first annual meeting of the California Licensed Land Surveyors Association was held in Fresno, on January 21, 1967. If you were not one of those present to hear Curtis Brown's keynote address, and his many lucid comments, or to participate in the panel discussion we can sincerely say that you missed a memorable occasion. Certainly one of the most valuable experiences was simply to meet and talk with our fellow Land Surveyors, to get acquainted, discuss common problems and find out what a swell bunch of people our profession contains.

A general meeting was held in the morning, followed by the innaguration of new Officers. Just in case you haven't heard the Officers innagurated were Fred Darby, President, Sacramento; Tom O'Conner, Vice President, Lower Lake; Herb Schumacher, Secretary - Treasurer, Sebastopol; Directors, Al Boysen, Los Angeles; Bob Curtis, Healdsburg; Jim Dowden, Sacramento; Eugene Foster, Sacramento; Fred Henstridge, Huntington Beach.

The keynote address by Curtis Brown was typical of his presentations, informative, provocative and occasionally humorous. In this instance his presentation delt with our professional responsibilities.

The afternoon session was taken up with a panel discussion regarding a professional surveyors organization. Participatents included; Al Boysen, Professor Ed Kuhlen; Eugene Foster, Bob Curtis, and F.T. Caporaal. A lively discussion it was indeed with much participation from the floor.

Our friends from Surveyors Service Company were also present and in addition to providing their always excellent display of new equipment and patiently answering all of our questions, graciously provided coffee and rolls during the coffee breaks as well as during the Sunday morning farewells.

Lets not forget the pleasant Saturday evening dinner and dance. This was certainly a pleasant conclusion to an all to short get together.

The Chairman of our first annual meeting was Gene Foster and the Association owes him and his family, who were pressed into service on many occasions, a sincere vote of thanks. His job was all the more difficult because it was a pioneering effort but the "First" will be remembered for many years by all of those who were fortunate enough to attend.

Certainly great thanks were also due to the many State Surveyors Associations who participated in the meeting by their informative displays in our "Salute to the Land Surveyors of the U.S.A." Exhibits were contributed by 15 Land Surveyor organizations. These were among the many who have so generously given of assistance and advice in our formative period.

\*\*\*\*\*

All of this review is to remind you that before long our second annual meeting will be upon us. The Board of Directors has approved the location and dates for San Francisco on January 19, 20, 21, 1968. If you have suggestions regarding the annual meeting send a note to one of the Association officers. This is your meeting not theirs. The greater the participation the greater will be the reward.

**PLAN NOW TO ATTEND THE ANNUAL MEETING IN  
SAN FRANCISCO - JANUARY 19, 20, 21, 1968.**



T.L. O'Conner

Fred Darby

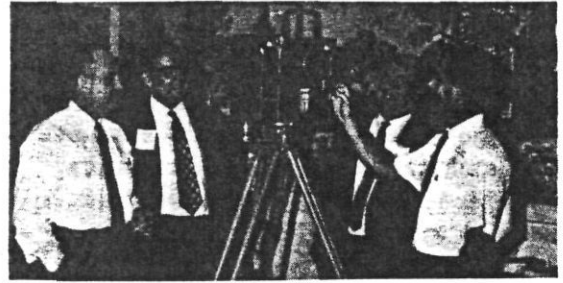
H. Schumacher



President Darby - Acceptance Address



The Board of Directors



J. Scheff, G. Colson & Surveyors Service

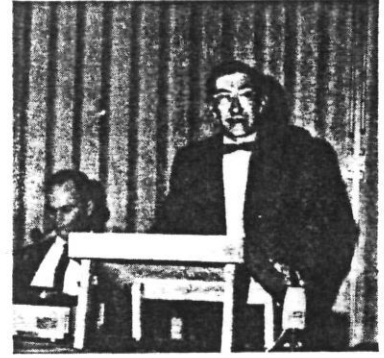
PANEL DISCUSSION



Al Boysen



Curtis Brown  
Keynote Address



Prof. Ed Kuhlen



F.T. Caporaal



Jim Dowden



Bob Curtis

## COMMITTEE ACTIVITIES

### Membership Committee:

As of August 31 the membership of the Association stood at 150. This was a 50% increase over the membership at the time of our first annual convention in January 67. Additional applications are being received each week and inquiries are constantly received. The committee has prepared an "Information Brochure" explaining the history, aims and activities of the Association. Copies of this brochure are available through the Secretary-Treasurer. The membership application has also been revised together with a personal history form. These have also been delivered to the Secretary-Treasurer.

### Education Committee:

A comprehensive review of college courses in surveying within the State has been completed. With few exceptions courses in surveying are no longer required at any State college, university or private university, for graduation in engineering. Several schools have excellent courses available as electives but commonly in upper division or the graduate level. Several junior colleges are doing a good job with surveying on a basic level within civil engineering technology programs. Fresno State and San Francisco State do have some excellent programs. ARE WE, THE PROFESSION, SUPPORTING OUR FEW EDUCATORS????????

### Legislative Committee:

The Chartered Engineers Act was presented to the Senate and Assembly during the past session. While both bills ultimately died in committee the Legislative Committee prepared and submitted to the authors of the bills amendments that would exclude Land Surveyors from the provisions of this Act. The Committee has also prepared a draft of proposed changes to the Land Surveyors Act. These will be covered in the next issue of the newsletter for response by the general membership. Chairman of the Legislative Committee is Gene Foster of Sacramento.

## LOCAL CHAPTERS

The Marin County chapter and the Lake-Mendocino County chapter have both been organized and are in full swing. Both of these groups have completed all action as required by the Constitution and By-Laws and have been presented with Charters. At this time no information regarding officers or specific activities is available.

Sacramento Chapter: The Chapter has adopted a Constitution and By-Laws and has been presented with a Charter by the Association. The following officers have been elected; William J. Sweeny, President, Ed Reding, Vice-Pres., Raymond Jacobsen, Secretary, Ralph Lydecker, Treasurer and Don Russler, Sgt. at Arms.

The Sacramento Chapter is currently co-sponsoring a Boy Scout Explorer Post specializing in Land Surveying.

Sonoma County Chapter: This chapter has also been presented with its Charter by the Association. Recent activities have included joint participation with the local chapter of the A.S.C.E. in the Marin-Sonoma Vocational Guidance Center. Opportunities in the Land Surveying profession were presented to several thousand high school students during a one week period. The chapter has also been active in local problems concerning the County lot split ordinance. Representatives of the group have discussed proposed changes in a soon to be presented revision with the planning director. Problems with regard to Records of Survey are also being worked on..

\*\*\*\*\*

News of local chapter cant be published unless its received. If you have formed a Chapter or are forming one send a summary of your activities to the Editor. Let others in the Association know what your group is doing!

\*\*\*\*\*

## **STOLEN !**

The following equipment has been reported stolen from the office of Herb Passarino, Santa Rosa, Calif.: Askania Theodolite, Serial No. 730020, (This instrument looks like the K & E 1e but has the designation "Tt. 360" cast into the side), Zeiss levels Serial No's 43551 and 53944, and Thermofax copying machine No. 76AG09477C. If you have any information concerning this equipment please contact the Secretary-Treasurer, Herb Schumacher.

NEW LAWS

Several new bills of importance to all Land Surveyors were passed by the Legislature and have been signed into law:

AB 175 Pertains to the filing of a final map for reverting to acreage land that has been previously subdivided.

AB 825 Provides for making a correction of a map filed under the Subdivision Map Act by a certificate of correction or the filing of an amended map.

AB 2093 Changes margins on Record of Survey maps, modifies required information for parcel maps, changes form of Surveyors certificate on parcel maps, etc.

Copies of these bills as well as any others may be obtained by writing your Assembly Representative or State Senator. Copies may also be obtained by writing directly to the Senate Bill Room, State Capitol, Sacramento, California.

NOMINATIONS COMMITTEE

During the Board of Directors meeting in September the Nominations Committee for the year 1967 was appointed. John Beaver, Sacramento, was appointed Chairman. Members include Bill Bridges, El Monte; Kurt Haessler, San Francisco; Dick Stephan, Healdsburg; Phil Windrem, Lakeport;

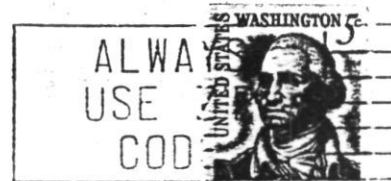
It is the responsibility of this committee to recommend to the Board candidates for Association officers. If you have recommendations of your own please contact one of the above mentioned members as soon as possible.

\*\*\*\*\*

Seminar on Modern Surveying

Advance information indicates that a second Seminar on Modern Surveying will be held this spring at the University of California. Plan now to participate in this excellent series conducted by well known specialists.

THE CALIFORNIA LICENSED LAND SURVEYORS ASSOCIATION  
2087 BLUCHER VALLEY ROAD  
SEBASTOPOL, CALIFORNIA  
95472



Mr. Eugene Lockton  
807 Fifth Ave.  
San Rafael, Calif.  
94901